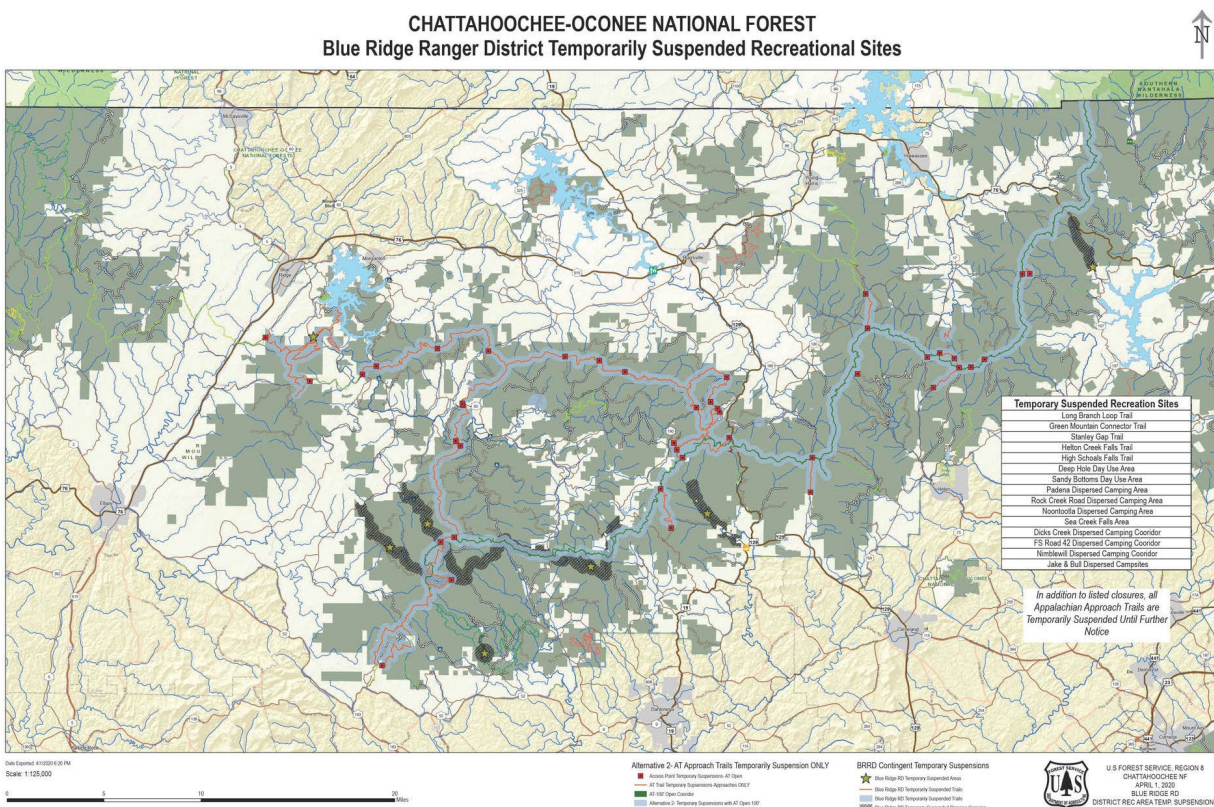


Chattahoochee-Oconee National Forests temporarily shuts down additional recreation areas in Lumpkin, Fannin, Union and Towns counties

Gainesville, Ga. (April 2, 2020) — The Chattahoochee-Oconee National Forests is temporarily shutting down all dispersed camping corridors, day-use areas, trailhead facilities and other recreation sites on the [Blue Ridge Ranger District](#) to protect public health and safety.

The decision aligns with state and local measures to stop the spread of COVID-19, and guidance from the Centers for Disease Control and Prevention (CDC).

“We continually consult with local leaders in our communities, in order to be in alignment with local decisions that protect human health and safety,” said Edward Hunter, Chattahoochee-Oconee National Forests’ acting forest supervisor. “The health and safety of our employees and the public remain our top priority.”



Map of recreation sites on the Blue Ridge Ranger District

Effective immediately, the following recreation sites are temporarily shutdown:

[Fannin County](#)

- Aska Trail System
- Shady Falls Trailhead
- Long Branch Loop Trail
- Green Mtn. Connector Trail
- Deep Gap Trailhead
- Green Mtn. Trail
- Stanley Gap Trailhead
- Stanley Gap Trail
- Fruitkoff Trail Access
- Deep Hole Day Use Area
- Sandy Bottoms Day Use Area

- Old Dial Rd. and Padena Dispersed Camping
- Rock Creek Rd. Dispersed Camping
- Noontootla Dispersed Camping (FS 58)
- Sea Creek Falls Trail

[Union County](#)

- Helton Creek Falls Trail

[Lumpkin County](#)

- Dicks Creek Dispersed Camping Corridor
- Forest Service Road 42 Dispersed Camping Corridor (runs through Gilmer, Fannin, Lumpkin)
- Nimblewill Dispersed Camping Corridor
- Jake and Bull Dispersed Campsites (trail use allowed)

[Towns County](#)

- High Shoals Falls Trail

Previously announced shutdowns include:

- [Appalachian Trail trailheads](#) including Dicks Creek Gap, Hogpen Gap, Neels Gap, Springer Mountain, Tesnatee Gap, Unicoi Gap and Woody Gap.
- Trails and associated trailheads including Andrews Cove Trail, segments of the Benton MacKaye Trail (from Fall Branch Falls to Springer Mountain), Byron Herbert Reece Memorial Trail, Dukes Creek Falls Trails, Duncan Ridge Trail, Dockery Lake Trail, Freeman Trail, Jacks Knob Trail, Jarrard Gap Trail, Logan Turnpike Trail, Long Creek Falls Trail, Panther Creek Falls Trail, Slaughter Creek Trail, Springer Mountain Trail, Raven Cliffs Falls Trail and Yonah Mountain Trail.
- All national forest [developed campgrounds, group recreation sites, picnic pavilions and all restrooms](#).

Guidelines for health and safety, recommended by the Centers for Disease Control and Prevention (CDC), are available at: www.cdc.gov/coronavirus/2019-ncov/about/prevention.html.

The latest information about recreation sites is available at www.fs.usda.gov/conf, also on Facebook and Twitter at @ChattOconeeNF.

USDA is an equal opportunity provider, employer, and lender.
#

About the Chattahoochee-Oconee National Forests

The Chattahoochee-Oconee National Forests provide the finest outdoor recreation opportunities and natural resources in Georgia. Featuring nearly 867,000 acres across 26 counties, thousands of miles of clear-running streams and rivers, approximately 850 miles of recreation trails, and dozens of campgrounds, picnic areas, and other recreation activity opportunities, these lands are rich in natural scenery, history and culture. The mission of the USDA Forest Service is to sustain the health, diversity, and productivity of the nation's forests and grasslands to meet the needs of present and future generations.

To receive instant alerts and updates on forest information, follow @ChattOconeeNF on Twitter and Facebook or visit us on the web at www.fs.usda.gov/conf.